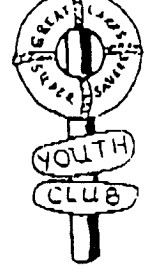




**YOUTH CLUB**  
**GREAT LAKES FIRST FEDERAL CREDIT UNION**  
 2110 3<sup>RD</sup> AVE. N., ESCANABA, MI 49829  
 1005 DELTA AVE., GLADSTONE, MI 49837  
 OCTOBER 2002



# HAPPY HALLOWEEN

## Halloween Safety Tips:

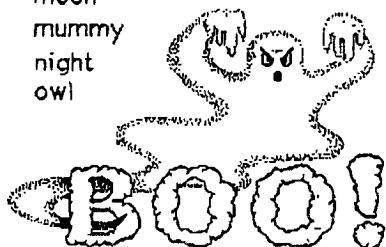
- ⬠ Always carry a flashlight.
- ⬠ Stay with an adult, and stay in a group.
- ⬠ Only visit houses with a porch light.
- ⬠ Never go anywhere with a stranger.
- ⬠ Do not enter someone's home when trick or treating.  
The door is far enough..
- ⬠ Wear a bright costume, so others can see you.
- ⬠ Avoid masks, and paint on makeup instead for unimpaired vision.
- ⬠ Never eat candy until parents have a chance to look it over.
- ⬠ Walk facing the oncoming traffic if there is no sidewalk.
- ⬠ Look both ways, obey all traffic laws, and use cross walks and crossing lights if available.
- ⬠ Designate a route and do not go to houses that aren't on that route.
- ⬠ Don't take a short cut through an alley or parking lot.
- ⬠ Carry money for a phone call in your shoe!



## Halloween Fun Word Search

bat	pumpkin
black	scare
broom	skeleton
cat	spider
costumes	spirits
ghosts	spooky
halloween	vampire
hoot	witch
monster	
moon	
mummy	
night	
owl	

g	h	o	s	t	s	b	a	t	n	t
b	o	l	h	s	p	o	o	k	y	p
v	o	b	a	w	i	t	c	h	o	u
a	t	l	l	b	r	o	o	m	w	m
m	q	a	l	n	i	g	h	t	l	p
p	j	c	o	s	t	u	m	e	s	k
i	n	k	w	a	s	c	a	t	p	i
r	s	k	e	l	e	t	o	n	i	n
e	j	e	e	m	u	m	y	d	f	
i	m	o	n	s	t	e	r	q	e	v
m	o	o	n	o	e	s	c	a	r	e

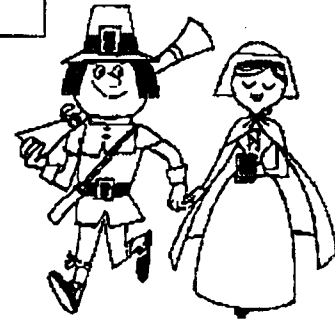
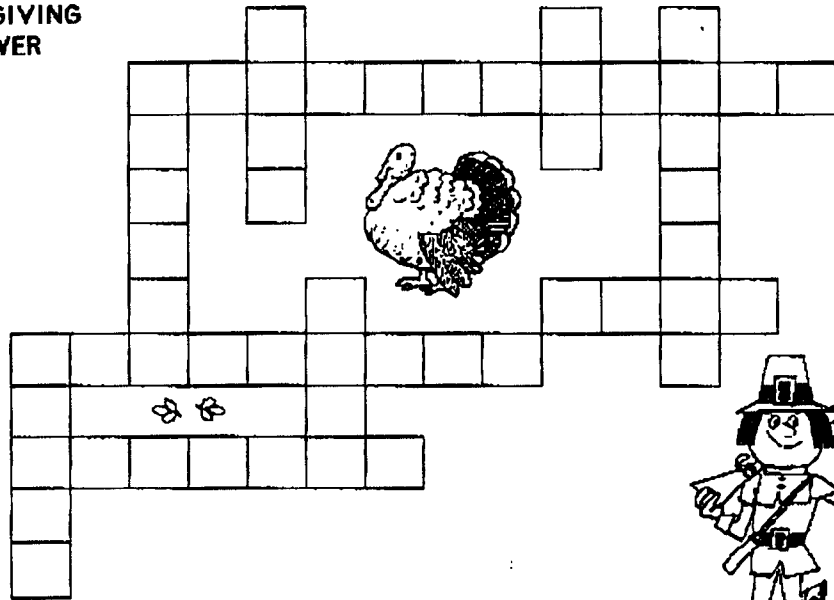


# Happy Thanksgiving

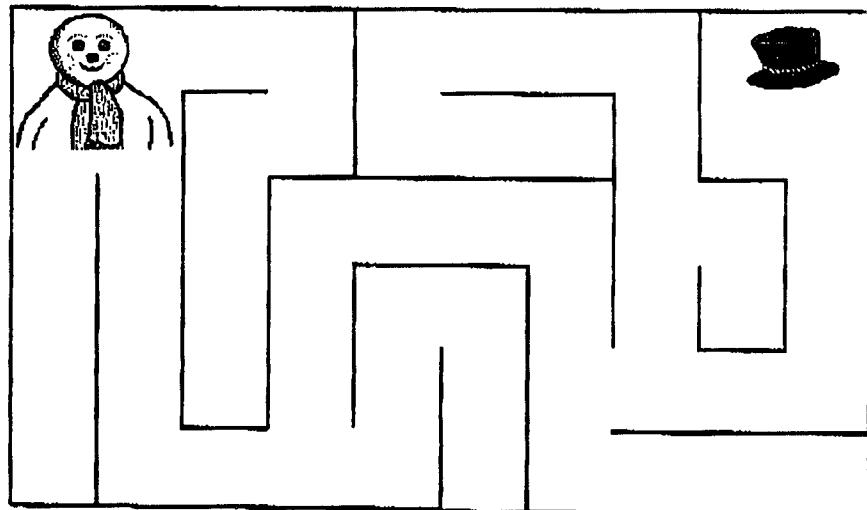
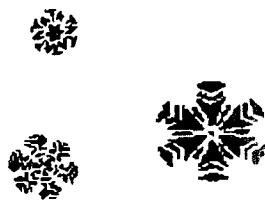
Fit all the words into this puzzle below



THANKSGIVING  
MAYFLOWER  
PILGRIM  
TURKEY  
INDIANS  
MAIZE  
CORN  
SAIL  
FALL  
PIE



MERRY CHRISTMAS



Help Frosty find his hat